

# Fire Prevention Tips

BY JOSH GARR

In keeping with our safety theme, here are some useful fire prevention tips that managers can use to educate unit owners and keep themselves current on safety issues within their corporations.



## Cooking Safety

- Never leave cooking unattended
- Always wear short or tight-fitting sleeves when you cook
- Keep towels, pot holders and curtains away from flames
- Never use the range or oven to heat your home

## Lighting Hazards

- Use light bulbs that match the recommended wattage on a lamp or lighting fixture. Overheating of light fixtures is a fire hazard.
- A bare light bulb in close proximity of clothing, fabric, etc. is a potential fire hazard



## Major Appliances

- Major appliances such as air conditioners, refrigerators, stoves, washer/dryers, etc. should be plugged directly into a wall receptacle outlet. Extension cords or plug strips should not be used.
- Only plug one heat-producing appliance, i.e. space heater, microwave, coffee maker, etc. into a receptacle outlet at a time
- Consider installing Arc Fault Circuit Interrupters (AFCI) as they shut off the electricity when a dangerous power situation is encountered



## Electrical Wiring

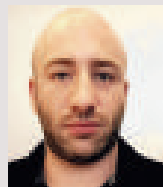
- Inspect extension cords for frayed or exposed wires or loose plugs
- Make sure outlets have cover plates and no exposed wiring
- Make sure wiring does not run under rugs, over nails, or across high traffic areas
- Do not overload extension cords or outlets
- Some signs of faulty electrical wiring are: breakers and fuses tripping frequently, dimming and flickering of lights, charred or discolouring of power outlets and switches, acrid burning smell, shocking switches and power outlets
- Faulty wiring can cause a short circuit and the heat generated by the electrical current can cause wiring to expand and contract, eventually loosening it. Once the wiring is loose, the electricity can arc, with a heat output reaching 815 to 982 degrees Celsius, sufficient to cause a fire.

## Heating Sources

- Place space heaters at least three feet away from flammable/combustible materials
- Never use an extension cord with a space heater. Always plug the cord directly into an outlet.
- Use space heaters that have an automatic shut-off option if it overheats, runs for an extended period of time or tips over
- Use only the type of fuel designated for your space heater

## Candles, Matches/Lighters and Smoking

- Use candle holders that are sturdy and don't tip over easily
- Keep candles at least a foot away from combustible items
- Keep matches/lighters away from children
- Never smoke in bed or when drowsy or medicated



Josh Garr is with a.p.i. Alarm Inc. He can be reached at 1-800-897-1039; josh.garr@apialarm.com. www.apialarm.com